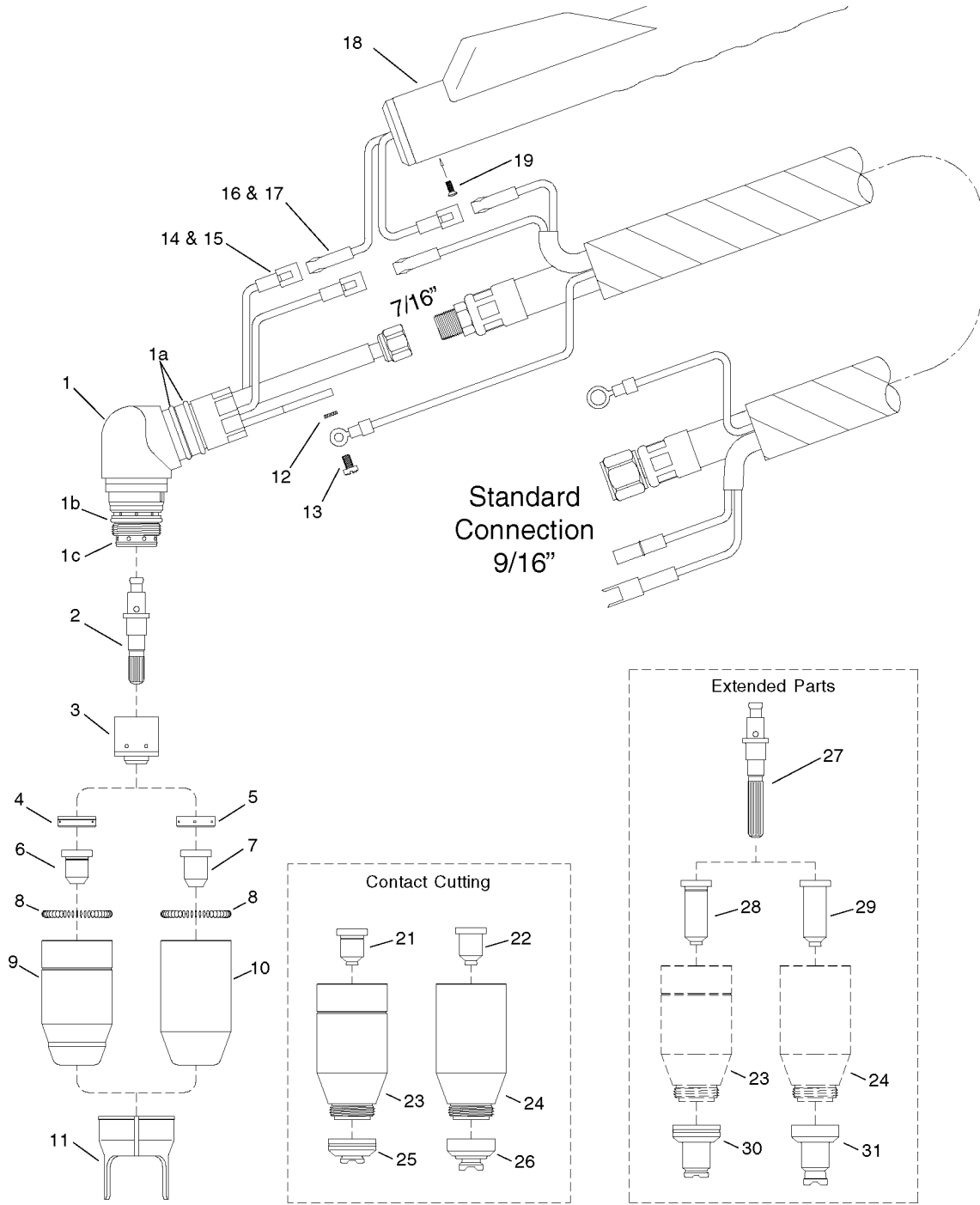


REPLACEMENT HAND TORCH PARTS SUITABLE FOR:

EL-60®



Ergodani is in no way affiliated with EL-60®. The parts advertised for sale are not genuine EL-60® parts, but are parts made for and by **Ergodani**. Reference to EL-60® machine, torches and numbers are for your convenience only. We reserve the right to substitute genuine EL-60® parts in place of **Ergodani** parts.

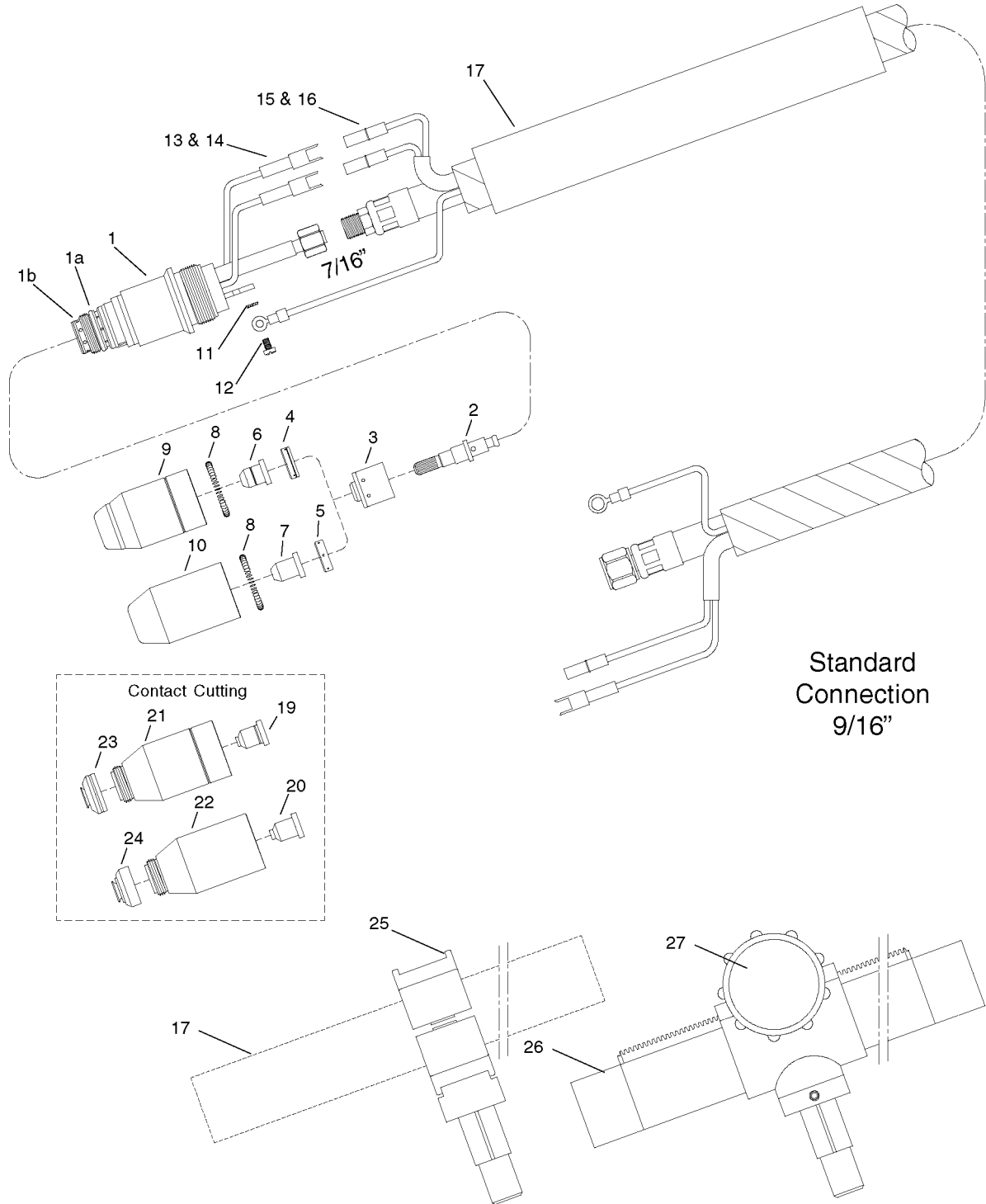
REPLACEMENT HAND TORCH PARTS SUITABLE FOR:

EL-60®

ITEM	CATALOG NUMBER	DESCRIPTION	STD. QTY
		EL-60 70° HAND TORCH 6 m (20 ft) LEADS	1
		EL-60 70° HAND TORCH 12 m (40 ft) LEADS	1
		EL-60 70° LEAD ASSEMBLY 6 m (20 ft) LENGHT	1
		EL-60 70° LEAD ASSEMBLY 12 m (40 ft) LENGHT	1
1	CS07500	EL-60 70° TORCH HEAD	1
1A	CS80533	O-RING	10
1B	CS80522	O-RING	10
1C	CS07144	O-RING	10
2	CS07025	ELECTRODE AIR/N ₂	10
3	CS07501	START CARTRIDGE 30/120A	1
4	CS60060	GAS DISTRIBUTOR 30/60A	5
5	CS60061	GAS DISTRIBUTOR 60/120A	5
6	CS51470	TIP CUTTING AIR/N ₂ 30A	10
	CS51471	TIP CUTTING AIR/N ₂ 40A	10
	CS51472	TIP CUTTING AIR/N ₂ 50/60A	10
7	CS51474	TIP CUTTING AIR/N ₂ 60A	10
	CS51475	TIP CUTTING AIR/N ₂ 70A	10
	CS51476	TIP CUTTING AIR/N ₂ 80A	10
	CS51477	TIP CUTTING AIR/N ₂ 90/100A	10
	CS51478	TIP CUTTING AIR/N ₂ 120A	10
8	CS60442	COIL SPRING	10
9	CS60480	SHIELD CUP STANDARD 30/60A (INCLUDING ITEM # 8)	1
10	CS60481	SHIELD CUP STANDARD 60/120A (INCLUDING ITEM # 8)	1
11	CS60444	DOUBLE POINTED SPACER	2
12	SEE NOTE	PANHEAD SCREW M3 x 6 mm UNI7687	10
13	SEE NOTE	INTERNAL STAR WASER A3 UNI8842	10
14	CS98111	PIN HOUSING	10
15	CS98101	PIN	10
16	CS98112	SOCKET HOUSING	10
17	CS98102	SOCKET	10
18	CS07106E	HANDLE WITH MICROSWITCH	1
19	SEE NOTE	PANHEAD SCREW M3 x 8 mm UNI7689	10
21	CS51480	CONTACT TIP AIR/N ₂ 30A	10
	CS51481	CONTACT TIP AIR/N ₂ 40A	10
	CS51482	CONTACT TIP AIR/N ₂ 50/60A	10
22	CS51484	CONTACT TIP AIR/N ₂ 60A	10
	CS51485	CONTACT TIP AIR/N ₂ 70A	10
	CS51486	CONTACT TIP AIR/N ₂ 80A	10
	CS51487	CONTACT TIP AIR/N ₂ 90/100A	10
	CS51488	CONTACT TIP AIR/N ₂ 120A	10
23	CS60482	SHIELD CUP BODY 30/60A (INCLUDING ITEM # 8)	2
24	CS60483	SHIELD CUP BODY 60/120A (INCLUDING ITEM # 8)	2
25	CS60485	SHIELD CUP HAND 30/60A	2
26	CS60486	SHIELD CUP HAND 60/120A	2
27	CS07504	EXTENDED ELECTRODE AIR/N ₂	10
28	CS51490	EXTENDED CONTACT TIP AIR/N ₂ 30A	10
	CS51491	EXTENDED CONTACT TIP AIR/N ₂ 40A	10
	CS51492	EXTENDED CONTACT TIP AIR/N ₂ 50/60A	10
29	CS51493	EXTENDED CONTACT TIP AIR/N ₂ 60A	10
	CS51494	EXTENDED CONTACT TIP AIR/N ₂ 70A	10
	CS51495	EXTENDED CONTACT TIP AIR/N ₂ 80A	10
	CS51496	EXTENDED CONTACT TIP AIR/N ₂ 90/100A	10
	CS51497	EXTENDED CONTACT TIP AIR/N ₂ 120A	10
30	CS60490	EXTENDED SHIELD CAP HAND 30/60A	2
31	CS60491	EXTENDED SHIELD CAP HAND 60/120A	2
N/S	CS51864	CIRCLE CUTTING ATTACHMENT	1

REPLACEMENT MACHINE TORCH PARTS SUITABLE FOR:

EL-60®



REPLACEMENT MACHINE TORCH PARTS SUITABLE FOR:

EL-60®

ITEM	CATALOG NUMBER	DESCRIPTION	STD. QTY
		EL-60 180° MACHINE TORCH 6 m (20 ft) LEADS	1
		EL-60 180° MACHINE TORCH 12 m (40 ft) LEADS	1
		EL-60 180° LEAD ASSEMBLY 6 m (20 ft) LENGHT	1
		EL-60 180° LEAD ASSEMBLY 12 m (40 ft) LENGHT	1
1	CS07503	EL-60 180° TORCH HEAD	1
1A	CS80533	O-RING	10
1B	CS80522	O-RING	10
2	CS07025	ELECTRODE AIR/N ₂	10
3	CS07501	START CARTRIDGE 30/120A	1
4	CS60060	GAS DISTRIBUTOR 30/60A	5
5	CS60061	GAS DISTRIBUTOR 60/120A	5
6	CS51470	TIP CUTTING AIR/N ₂ 30A	10
	CS51471	TIP CUTTING AIR/N ₂ 40A	10
	CS51472	TIP CUTTING AIR/N ₂ 50/60A	10
7	CS51474	TIP CUTTING AIR/N ₂ 60A	10
	CS51475	TIP CUTTING AIR/N ₂ 70A	10
	CS51476	TIP CUTTING AIR/N ₂ 80A	10
	CS51477	TIP CUTTING AIR/N ₂ 90/100A	10
	CS51478	TIP CUTTING AIR/N ₂ 120A	10
8	CS60442	COIL SPRING	10
9	CS60480	SHIELD CUP STANDARD 30/60A (INCLUDING ITEM # 8)	2
10	CS60481	SHIELD CUP STANDARD 60/120A (INCLUDING ITEM # 8)	2
11	SEE NOTE	PANHEAD SCREW M3 x 6 mm UNI7687	10
12	SEE NOTE	INTERNAL STAR WASER A3 UNI8842	10
13	CS95577	PIN HOUSING	10
14	CS94651	PIN	10
15	CS95578	SOCKET HOUSING	10
16	CS95764	SOCKET	10
17	CS07215	FIBERGLASS POSITIONING TUBE	1
19	CS51480	CONTACT TIP AIR/N ₂ 30A	10
	CS51481	CONTACT TIP AIR/N ₂ 40A	10
	CS51482	CONTACT TIP AIR/N ₂ 50/60A	10
20	CS51484	CONTACT TIP AIR/N ₂ 60A	10
	CS51485	CONTACT TIP AIR/N ₂ 70A	10
	CS51486	CONTACT TIP AIR/N ₂ 80A	10
	CS51487	CONTACT TIP AIR/N ₂ 90/100A	10
	CS51488	CONTACT TIP AIR/N ₂ 120A	10
21	CS60482	SHIELD CUP BODY 30/60A (INCLUDING ITEM # 8)	2
22	CS60483	SHIELD CUP BODY 60/120A (INCLUDING ITEM # 8)	2
23	CS60487	SHIELD CAP MACHINE 30/60A	2
24	CS60488	SHIELD CAP MACHINE 60/120A	2
25	CS07217	MOUNTING BLOCK	1
26	CS07216	FIBERGLASS POSITIONING TUBE WITH RACK	1
27	CS72827	PINION ASSEMBLY	1